



# FREIGHT CLUSTER PLAN

IN COOPERATION WITH **ARC**

**STEERING COMMITTEE MEETING  
SEPTEMBER 12, 2023**

PRESENTED BY



**METRO ANALYTICS**

IN ASSOCIATION WITH



# Agenda:

- **Introduction and Purpose of Study**
- **Prevailing Issues**
- **Anticipated Outreach Activities**
- **Inventory and Assessment Preliminary Results**
- **Traffic Study Intersections**
- **Steering Committee Input**
- **Next Steps: Inventory and Assessment Report, Best Practices Report, Traffic Study**



### Collaborative Team Roles:



**METRO ANALYTICS**

- **Prime Firm: Project Identification and Prioritization, Freight and Economic Analysis**



- **Traffic Study, Work Program Development, Roadway Design, GDOT Coordination**



- **Stakeholder Involvement, Outreach Support, Social Media**



**KB** | ADVISORY GROUP

- **Market and Real Estate Assessment, Industrial Development Best Practices**



### Purpose:

- **Understand** existing freight assets and surrounding issues
- Guide future development of freight assets to create sustainable industrial development
- Coordination of ongoing and future projects
- Provide a cost-effective opportunistic work program

### Key focus areas:



**Promote a safe, balanced transportation environment for freight and multimodal travel**



**Promote economic development**



**Identify appropriate industrial land uses**



**Promote efficient transportation solutions**



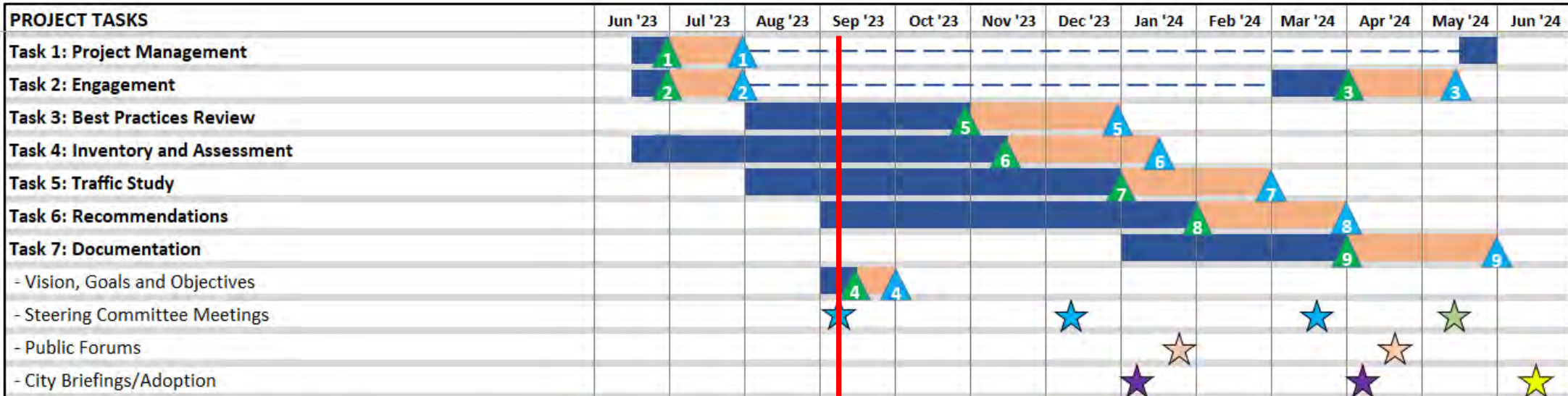
**Protect nearby communities**



**Engaging the private sector and community stakeholders**



# Project Schedule:



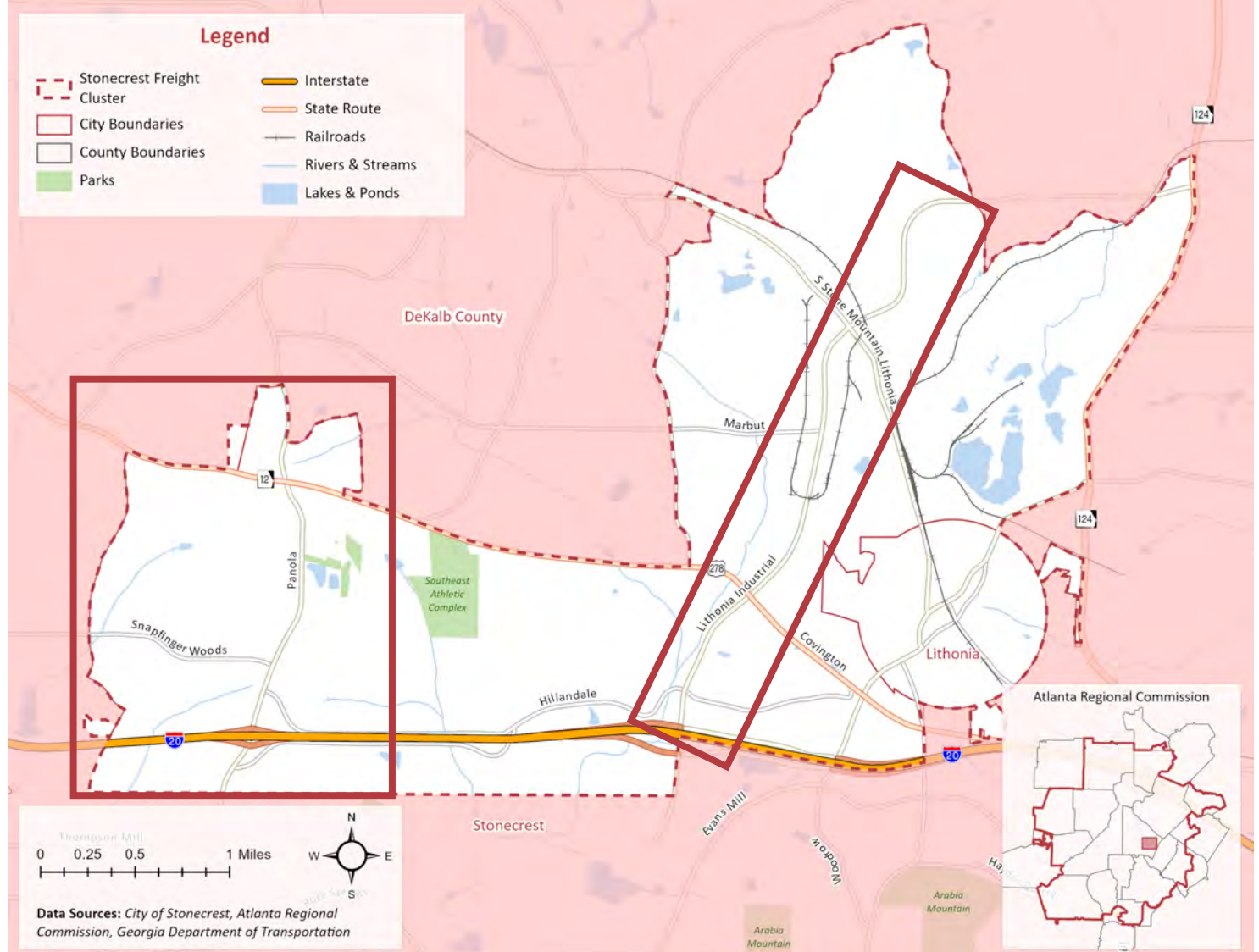
- Steering Committee Meetings
- Optional Steering Committee Meeting (If Needed)
- Public Forums
- City Briefings
- Adoption by City
- 1 Project Management Plan
- 2 Stakeholder Engagement and Outreach Plan
- 3 Summary of Public Involvement Activities
- 4 Vision, Goals and Objectives
- 5 Best Practices Report
- 6 Inventory and Assessment Report
- 7 Traffic Study Report
- 8 Recommended Work Program/Policy Recommendations
- 9 Recommendations Final Report and Executive Summary
- Denotes Internal Review Period

**STEERING COMMITTEE MEETING  
SEPTEMBER 12, 2023**



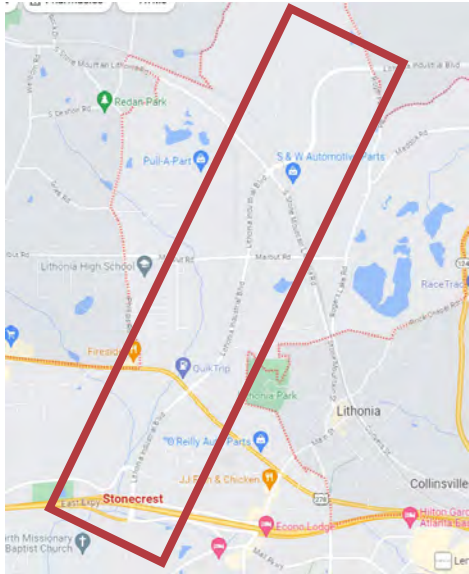
# Overview of the Study Area

- Study area consists of the northern Stonecrest primarily north of I-20
- Two major industrial areas
  - Lithonia Industrial Boulevard
  - Panola Road and Snapfinger Woods Drive
- City of Lithonia
  - Commercial areas near Max Cleland Boulevard and Swift Street
- Arabian Mountain National Heritage Area south of the study area



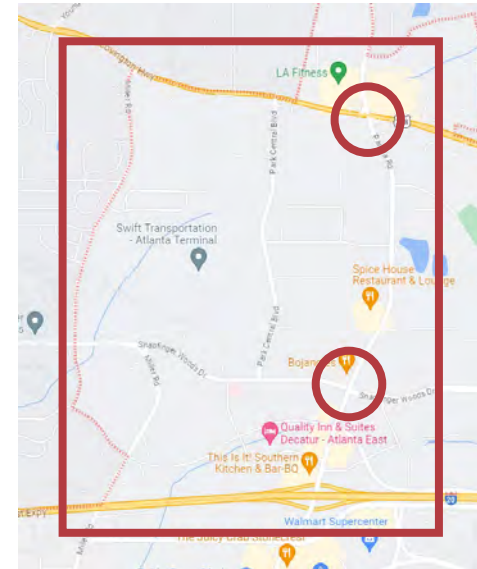
# Prevailing Issues:

- **Two Primary Industrial Areas (Lithonia Industrial District, Park Central/Panola Road Corridor)**



- **Lithonia Industrial District**

- **Aging Development**
- **Arabia Mountain National Heritage Area**
- **Insufficient Roadways for Freight**



- **Park Central/Panola Road Corridor**

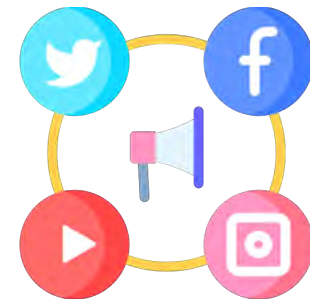
- **Access Issues at US 278/Covington Highway and Snapfinger Woods Drive**

- **Recent Influx of Gravel Truck Parking Lots**
- **Requirements that restrict development of new gas stations**
- **Integrating NEVI Plan into the City's infrastructure (w presence of I-20)**



# Anticipated Outreach Activities:

- **Steering Committee (3-4 Meetings)**
- **Stakeholder Interviews (Identify freight related challenges, facility operations, trends, potential projects)**
- **Surveys**
  - **Driver Intercept Survey (Driver feedback about access, congestion, parking and safety)**
  - **Stakeholder/Community Survey (Feedback on access, commute times, multimodal issues)**
  - **Follow-up Stakeholder Survey (Validate draft recommendations)**
- **Public Forums**
- **Communication Tools**
  - **Project Landing Page**
  - **Social Media**





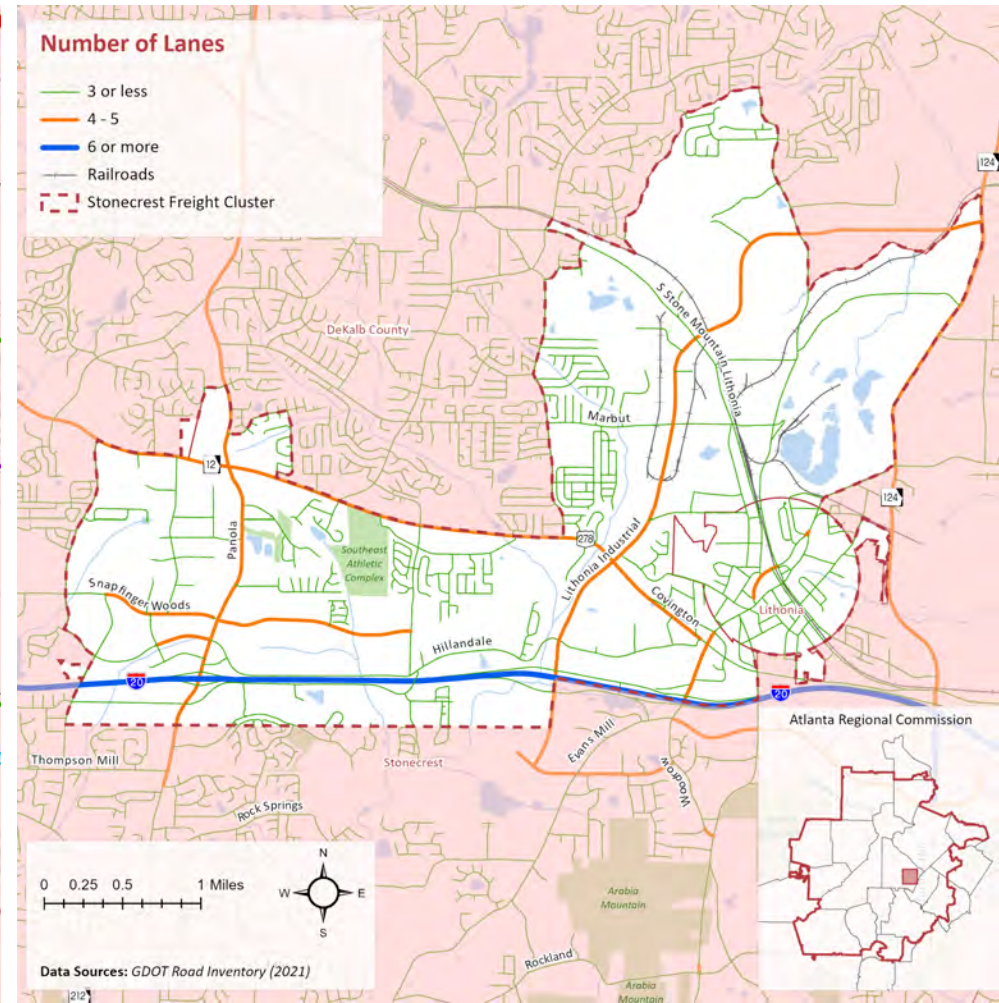
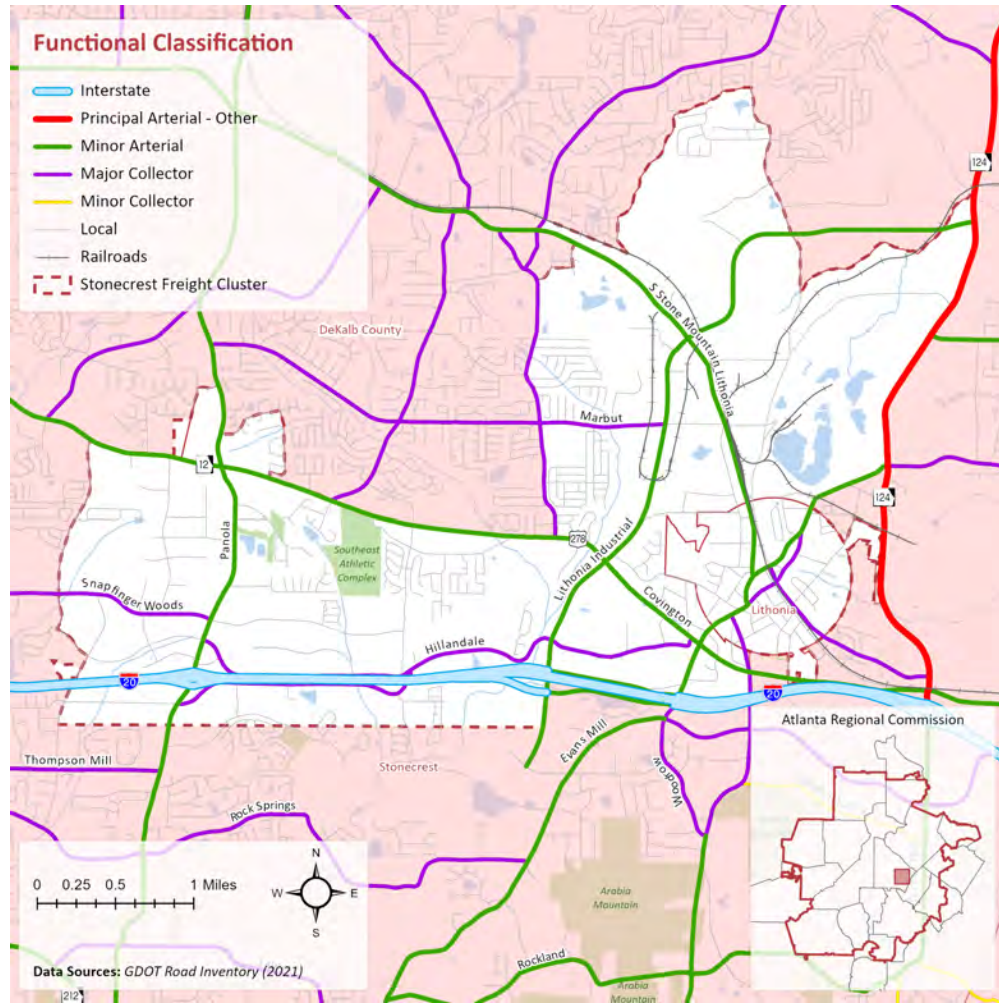
### Roadway Characteristics: General Traffic

### Functional Class and Number of Lanes

Most minor arterials  
and major collectors  
are 4-lane roadways

2-3 lane roads:

- South Stone Mountain Lithonia Road
- Evans Mill Road (Partial)
- Hillandale Drive
- Marbut Road



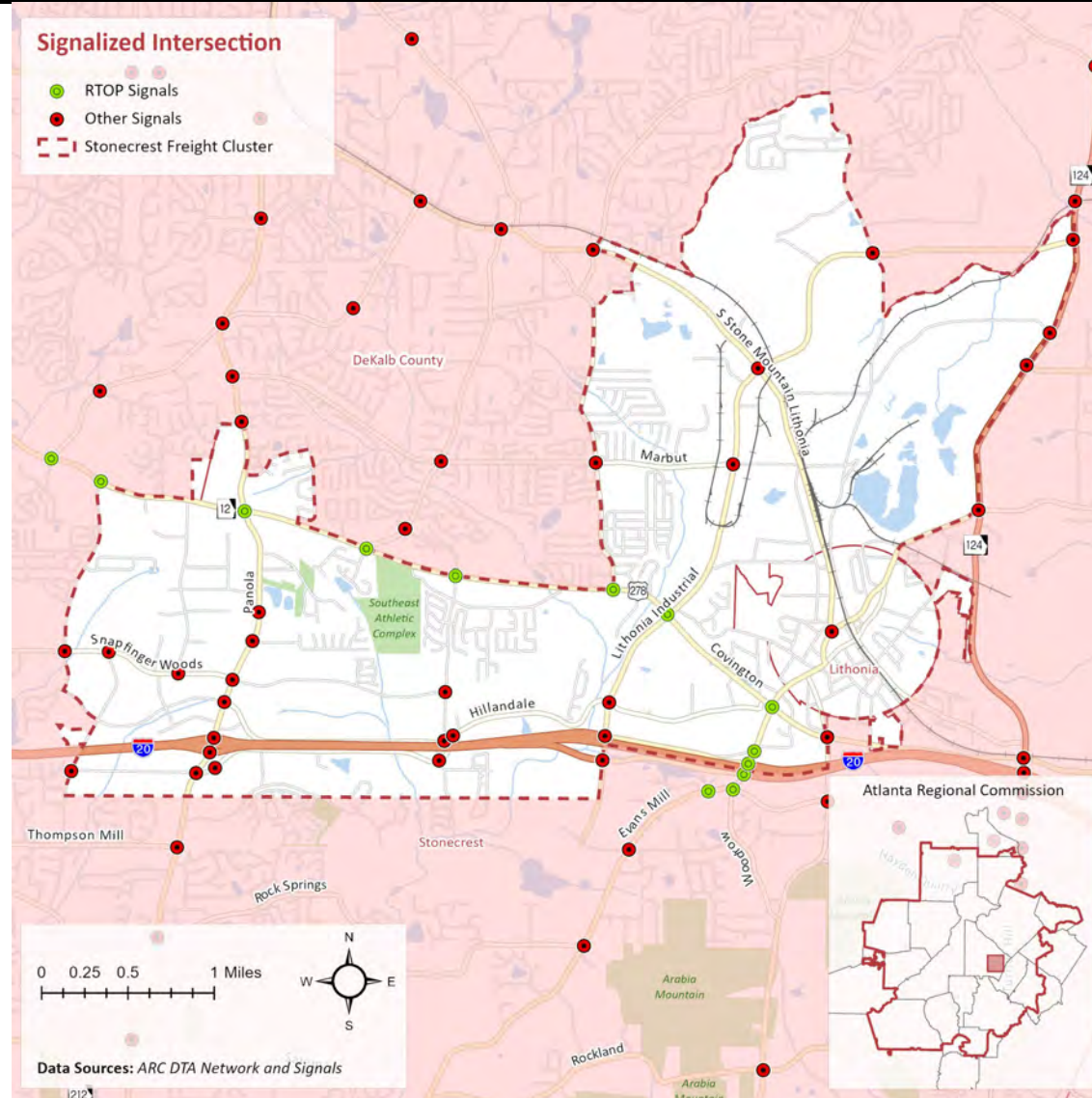
### Roadway Characteristics:

### Signalized Intersections

#### RTOP Program

- US 278/Covington Highway
- Evans Mill Road

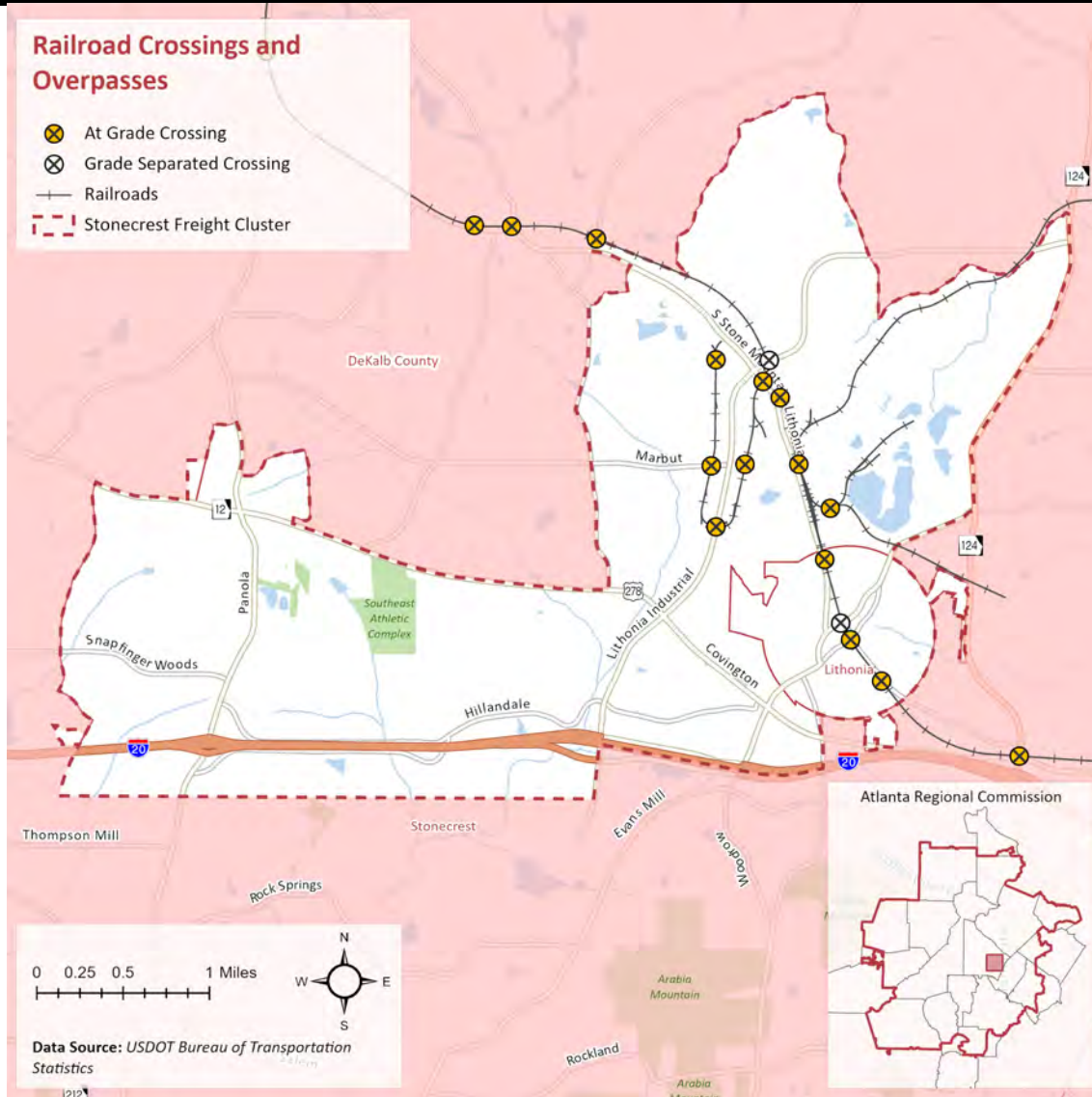
Significant number of signals along Panola Road and Snapfinger Woods Drive



### Railroad Characteristics:

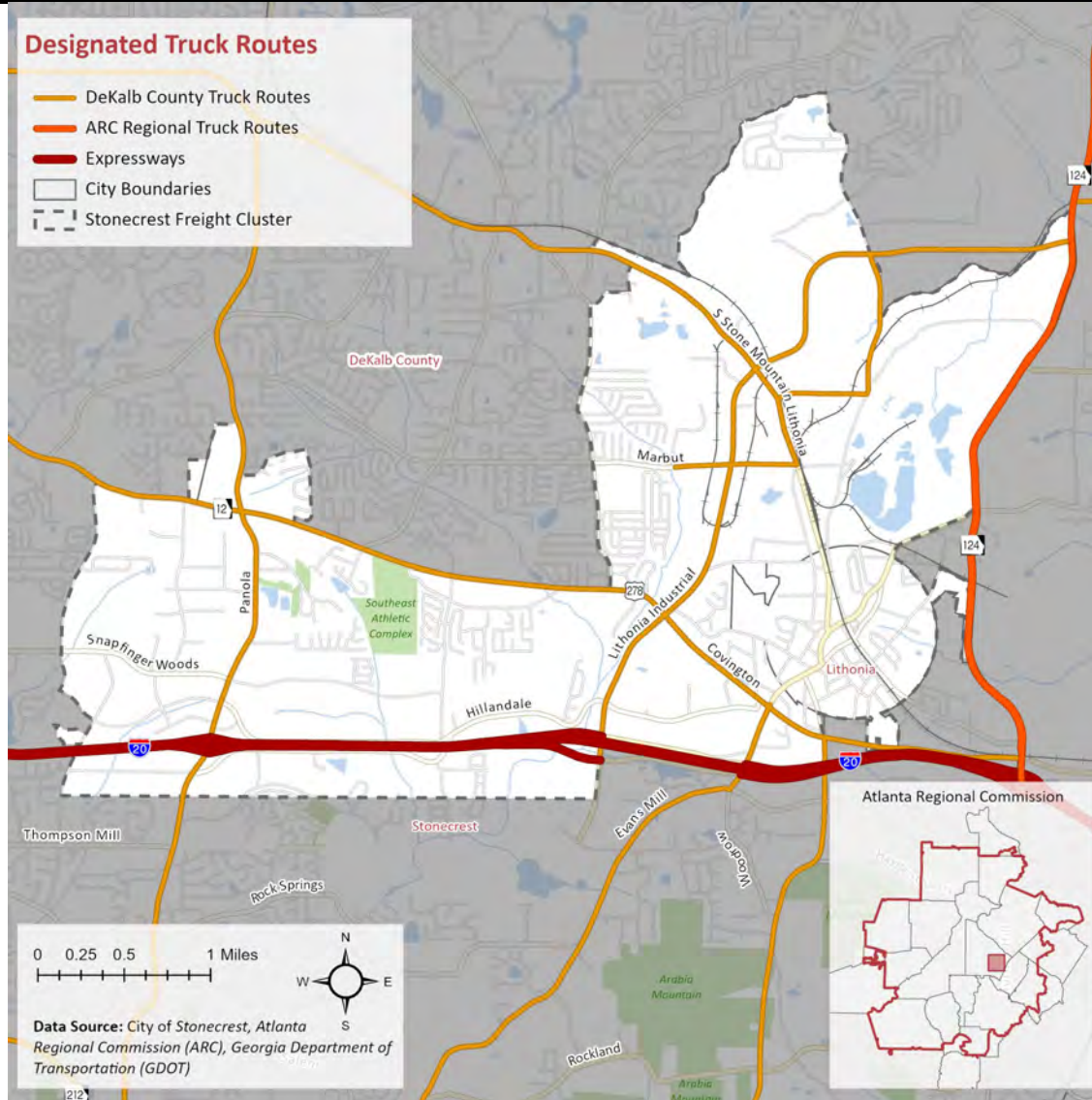
#### Crossings

Railroad crossing are primarily located in the east end of the study area parallel to South Stone Mountain Lithonia Road and Lithonia Industrial Boulevard



### Freight Network: Designated Truck Routes

- GDOT – I-20  
 ARC – GA-124/Turner Hill Road  
 DeKalb County -
- Panola Road\*
  - US 278/Covington Highway
  - Lithonia Industrial Boulevard
  - Evans Mill Road (Partial)
  - Marbut Road(Partial)



\*- DeKalb County Truck Route Ordinance being updated to remove Panola Road south of I-20 from the network, a truck-restricted route.

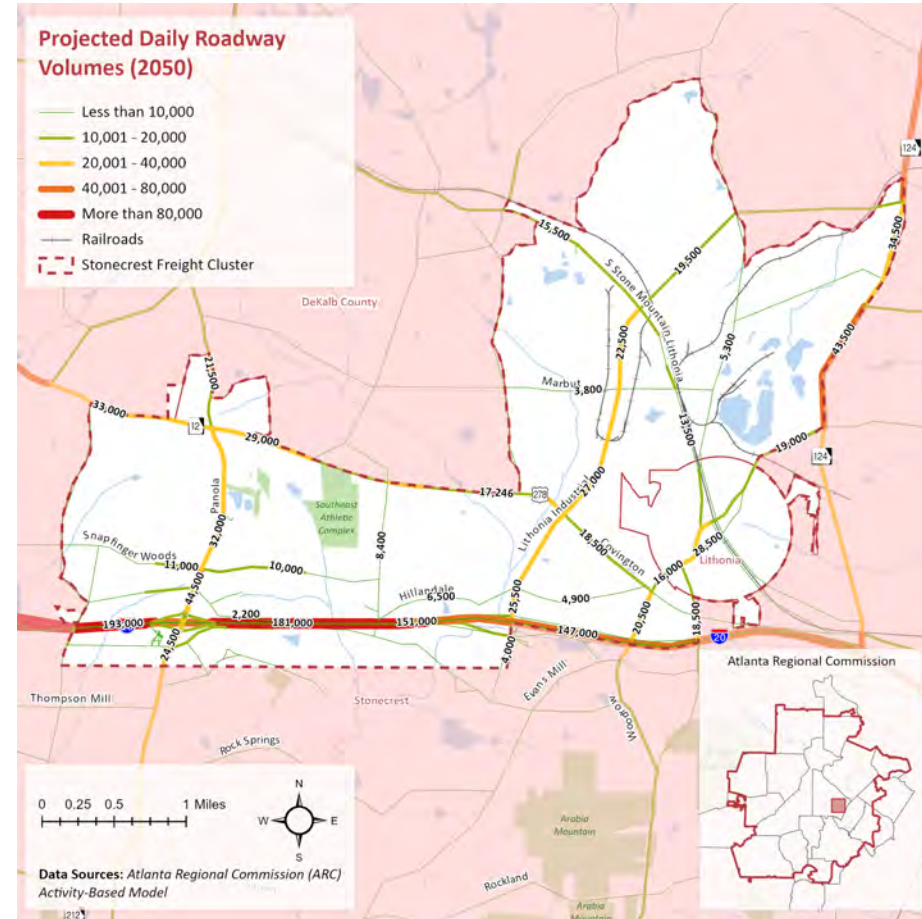
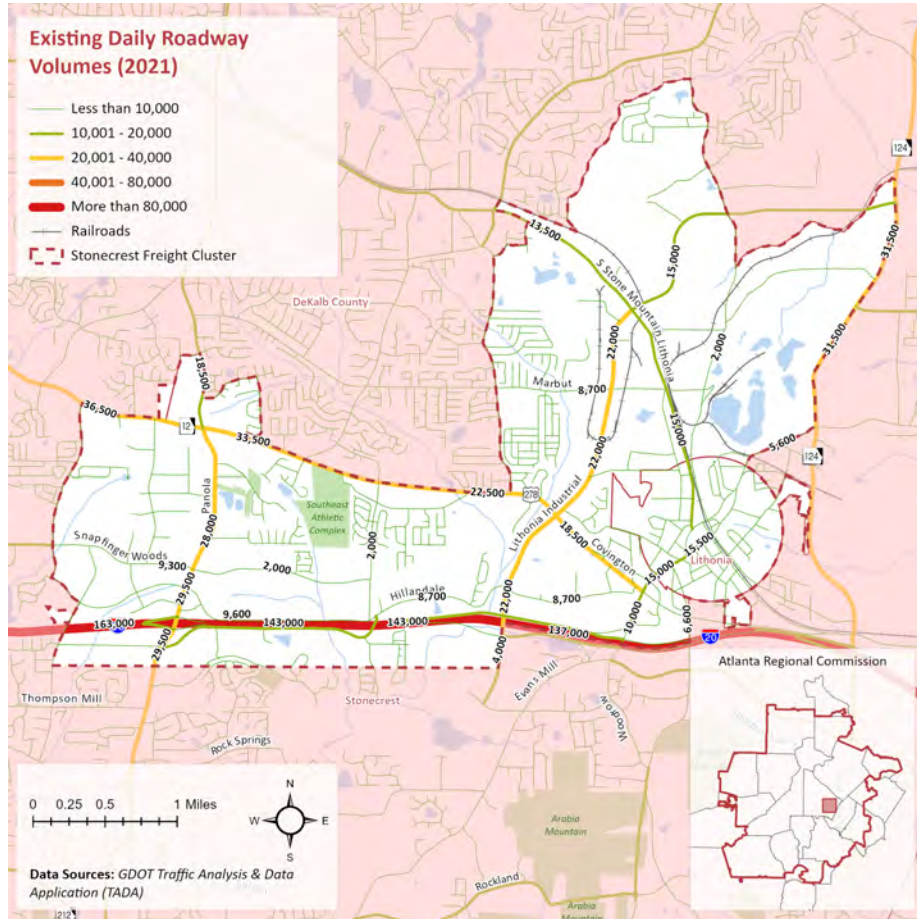


### Roadway Characteristics: General Traffic

### Existing (2021) and Projected (2050) Traffic Volumes

A review of the existing and projected traffic volumes identifies growth along:

- I-20 (38,000, 26%)
- Panola Road (4,000, 14%)
- GA-124/Turner Hill Road (12,000, 38%)
- Lithonia Industrial Boulevard (5,000, 22%)

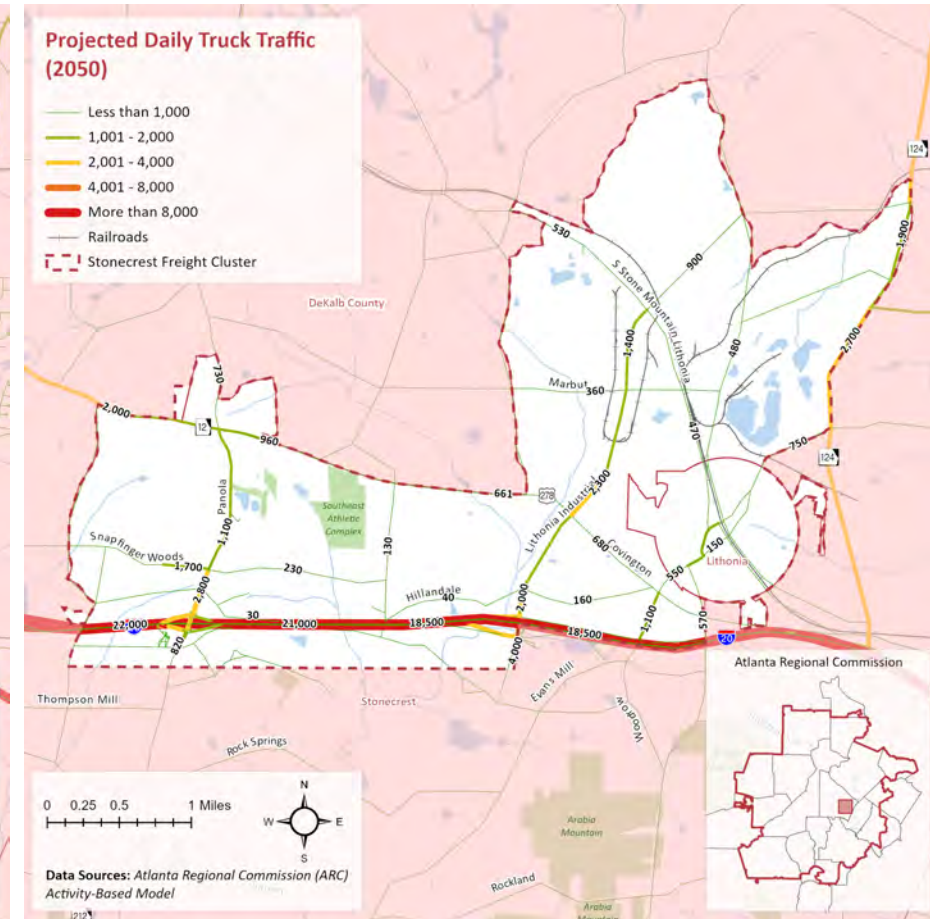
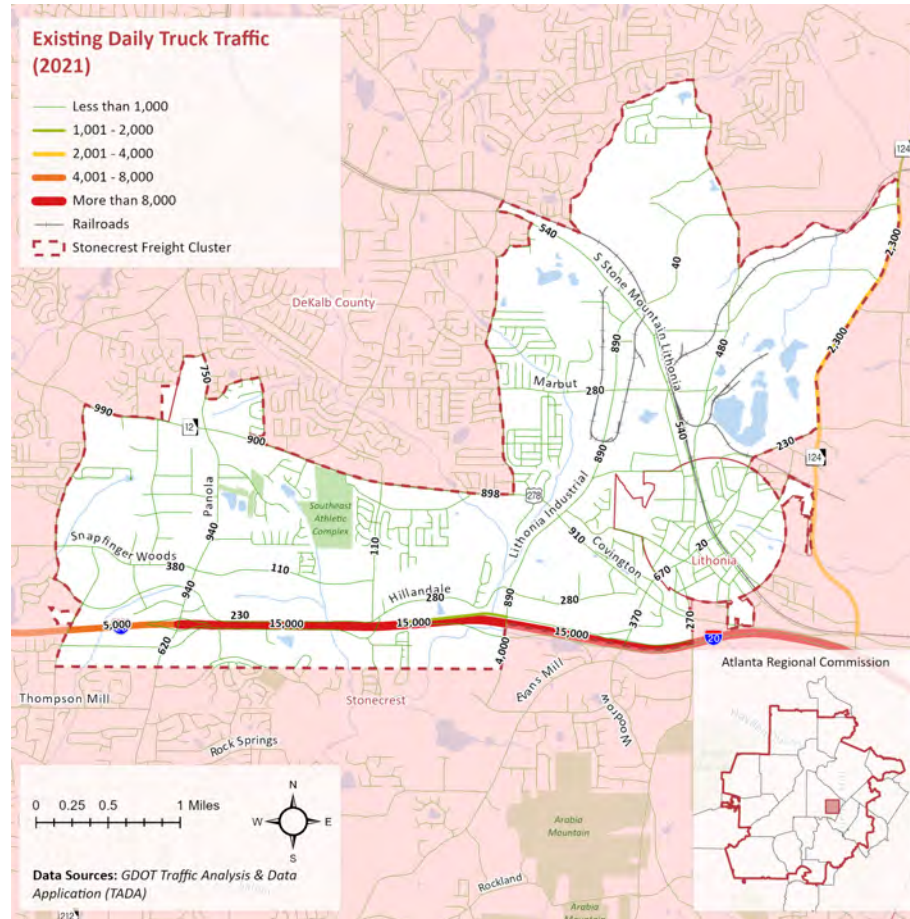


### Roadway Characteristics: General Traffic

### Existing (2021) and Projected (2050) Truck Volumes

A review of the existing and projected traffic volumes identifies growth along:

- I-20 (+6,000 trucks)
- Panola Road (+1,900 trucks)
- US 278/Covington Highway (+1,000 trucks)
- Lithonia Industrial Boulevard(+1,400 trucks)

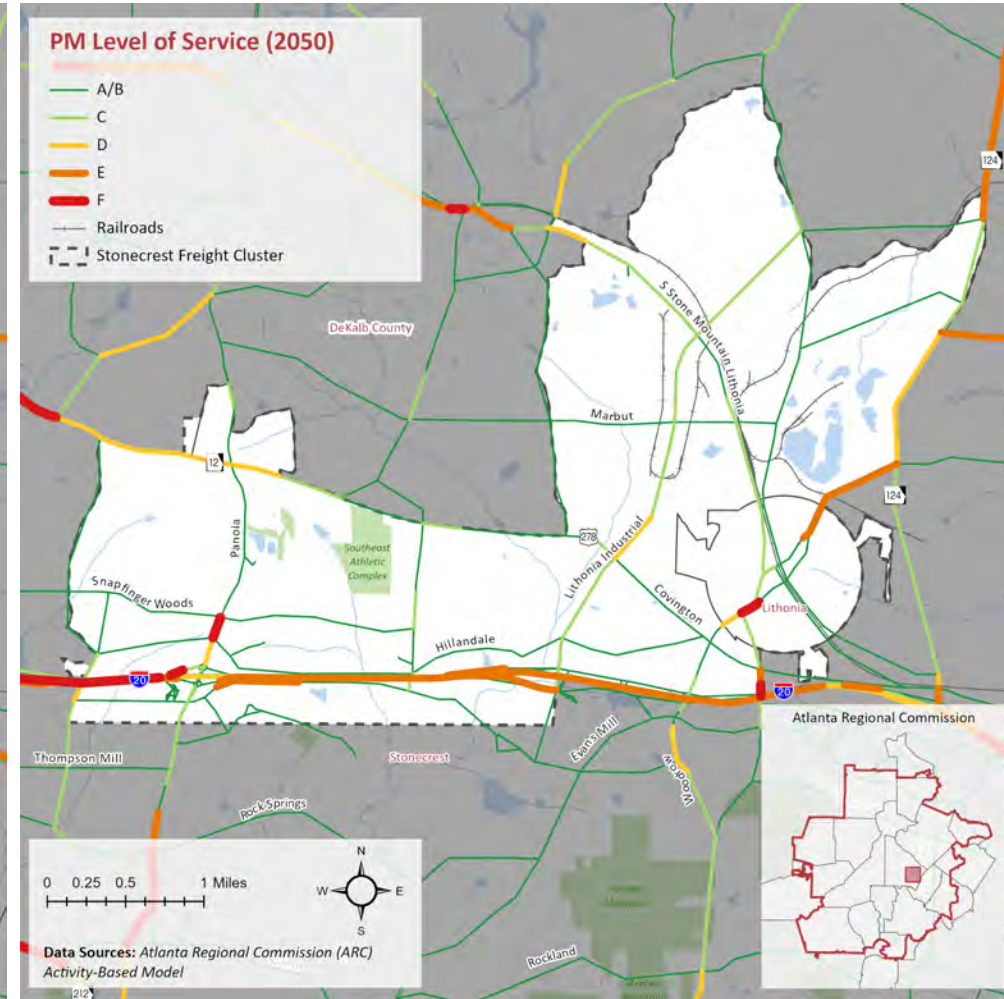
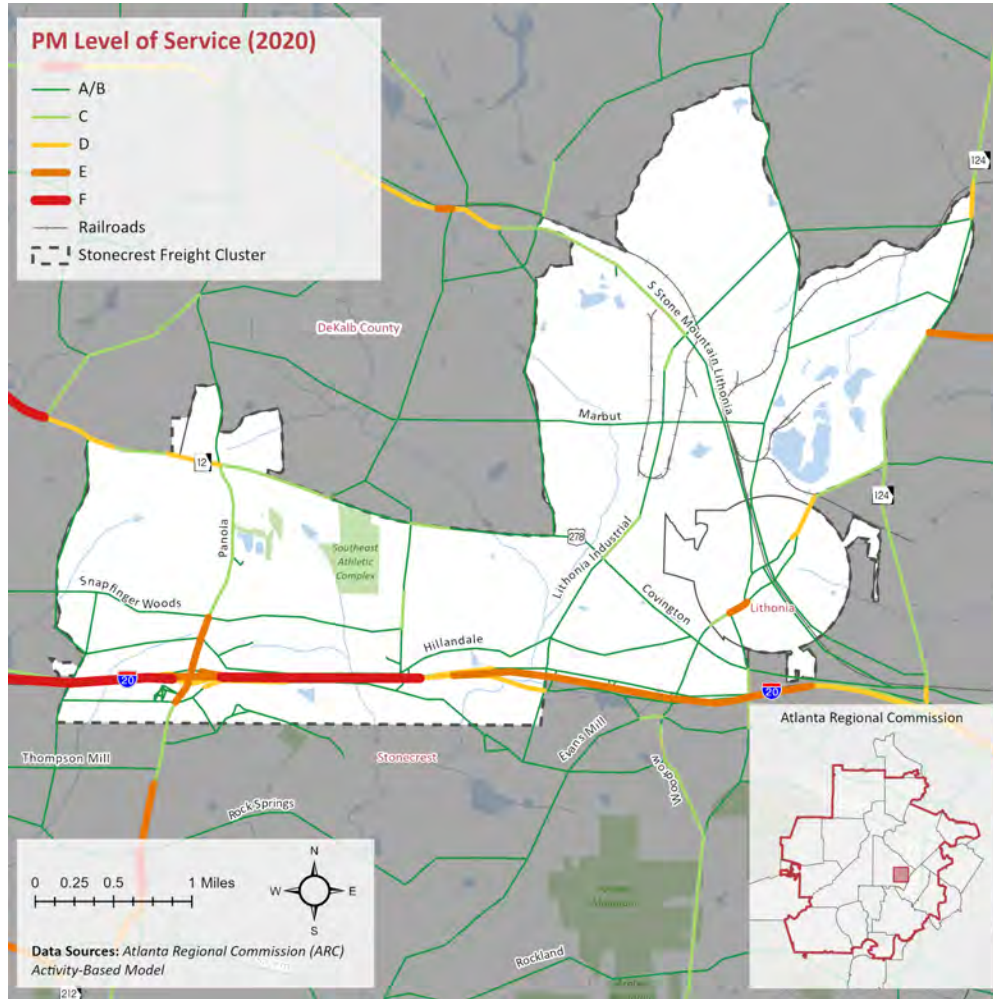


Roadway Characteristics:  
Congestion

Level of Service (LOS)

Projected Increased Congestion along multiple roadways:

- Panola Road
- Lithonia Industrial Boulevard
- GA-124/Turner Hill Road
- Main Street
- Max Cleland Boulevard



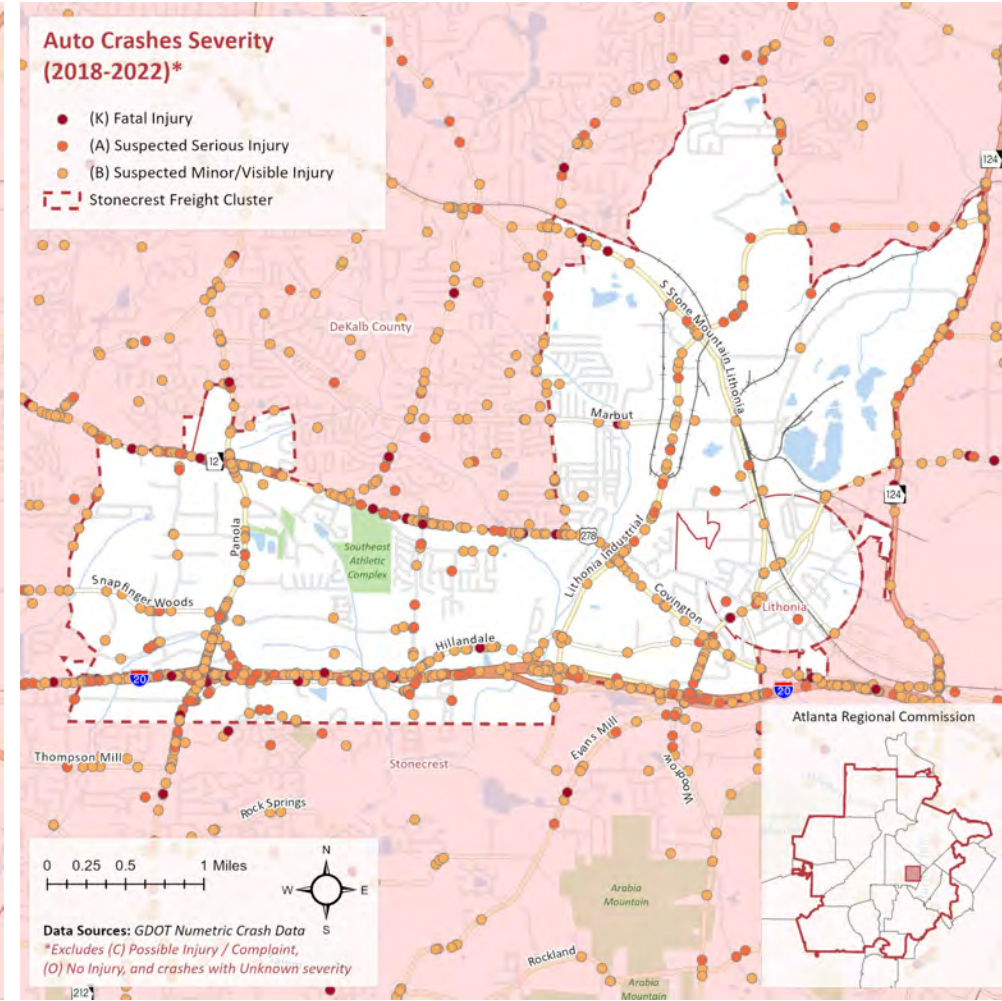
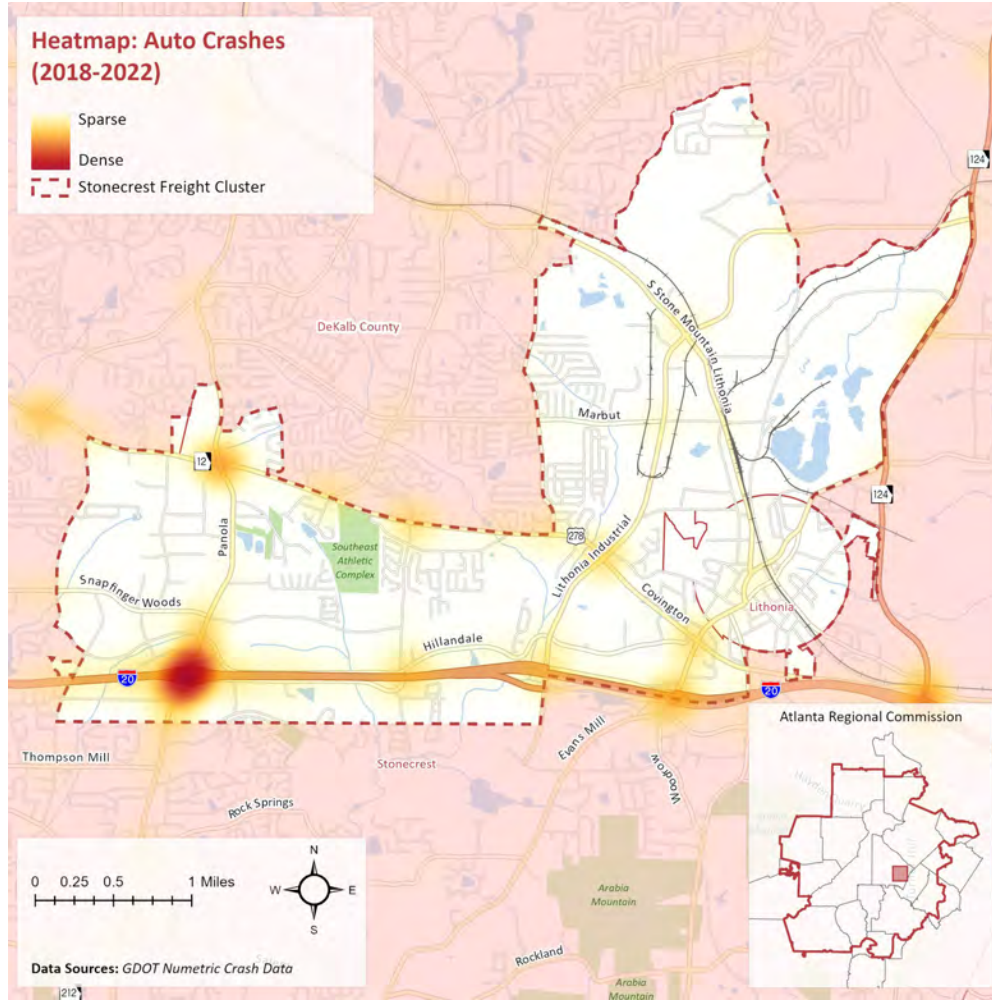
### Safety Characteristics: Crashes

#### Auto Crashes

Most accidents occur at the I-20 and Panola Road intersection

Other locations include:

- Panola Road/US 278/Covington Highway
- Evans Mill Road





### Safety Characteristics: Crashes

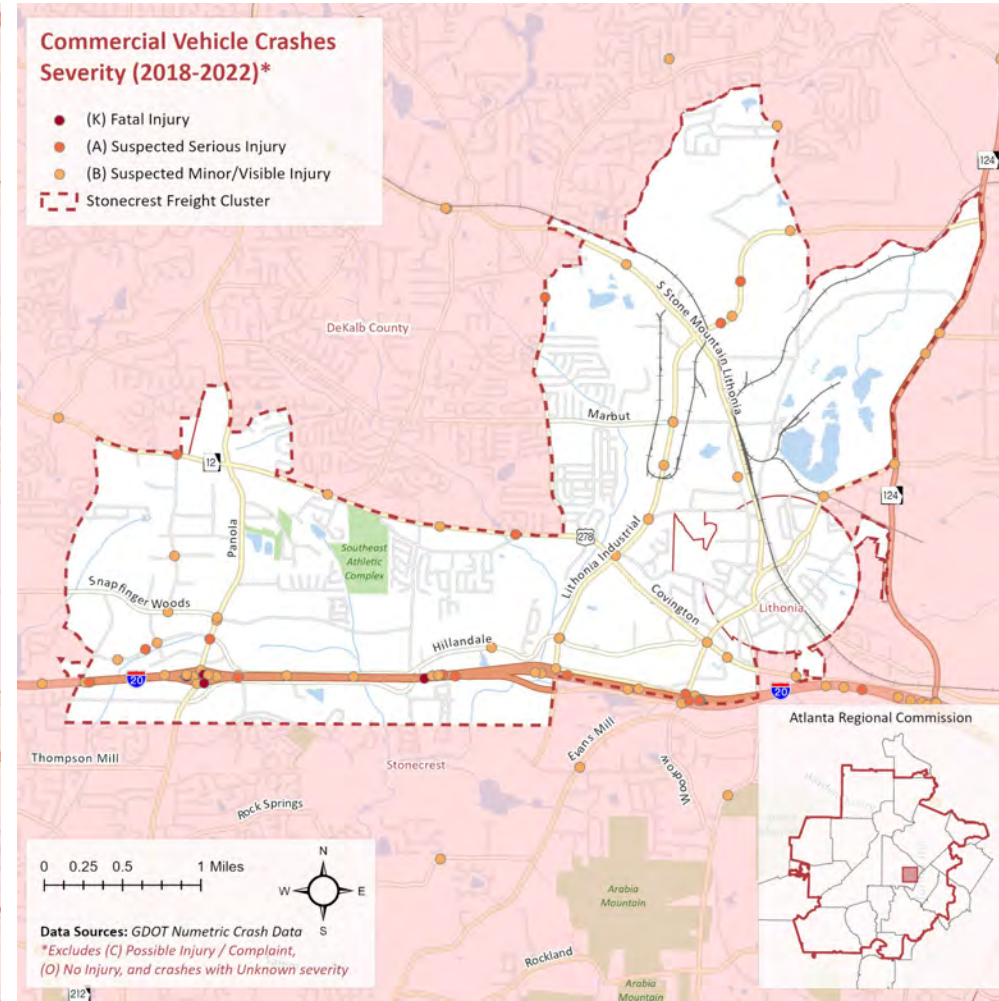
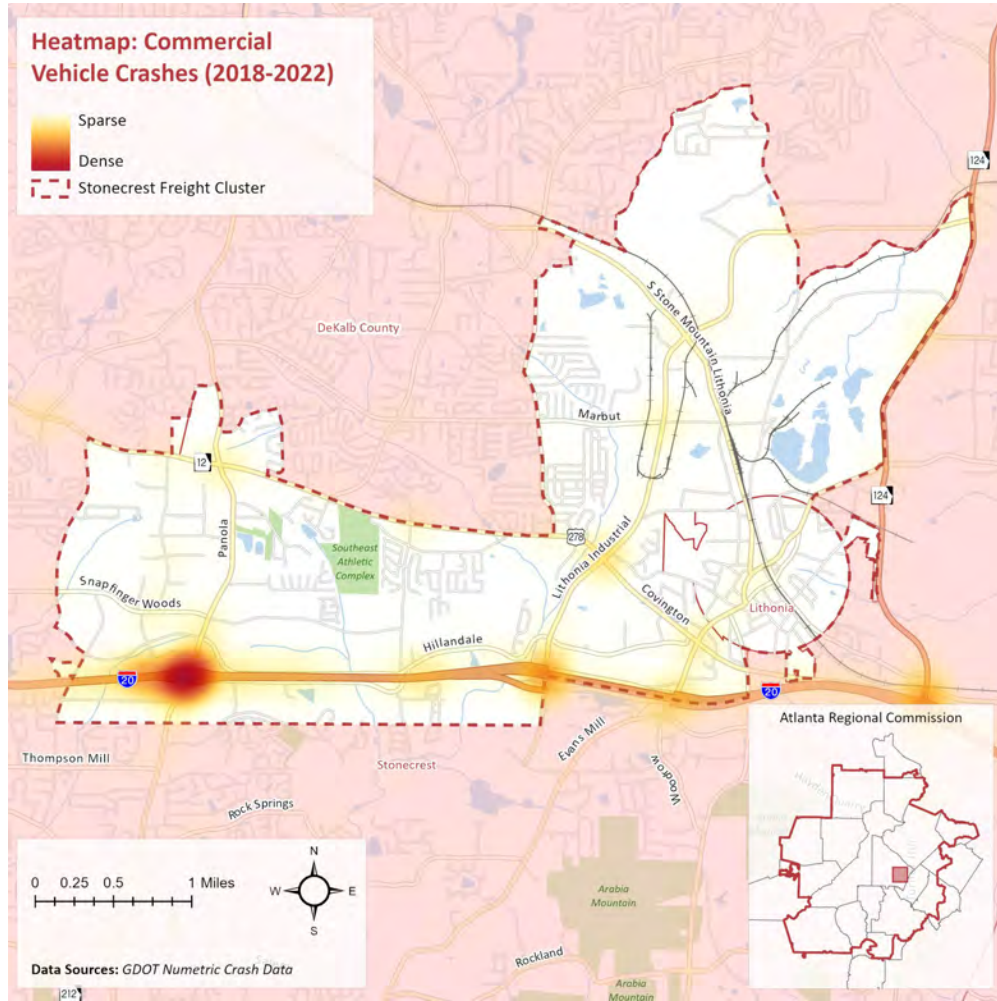
### Commercial Vehicle Crashes

Highest truck crashes

- I-20
- Panola Road

Additional hotspots include

- I-20/Lithonia Industrial Boulevard
- Evans Mill Road



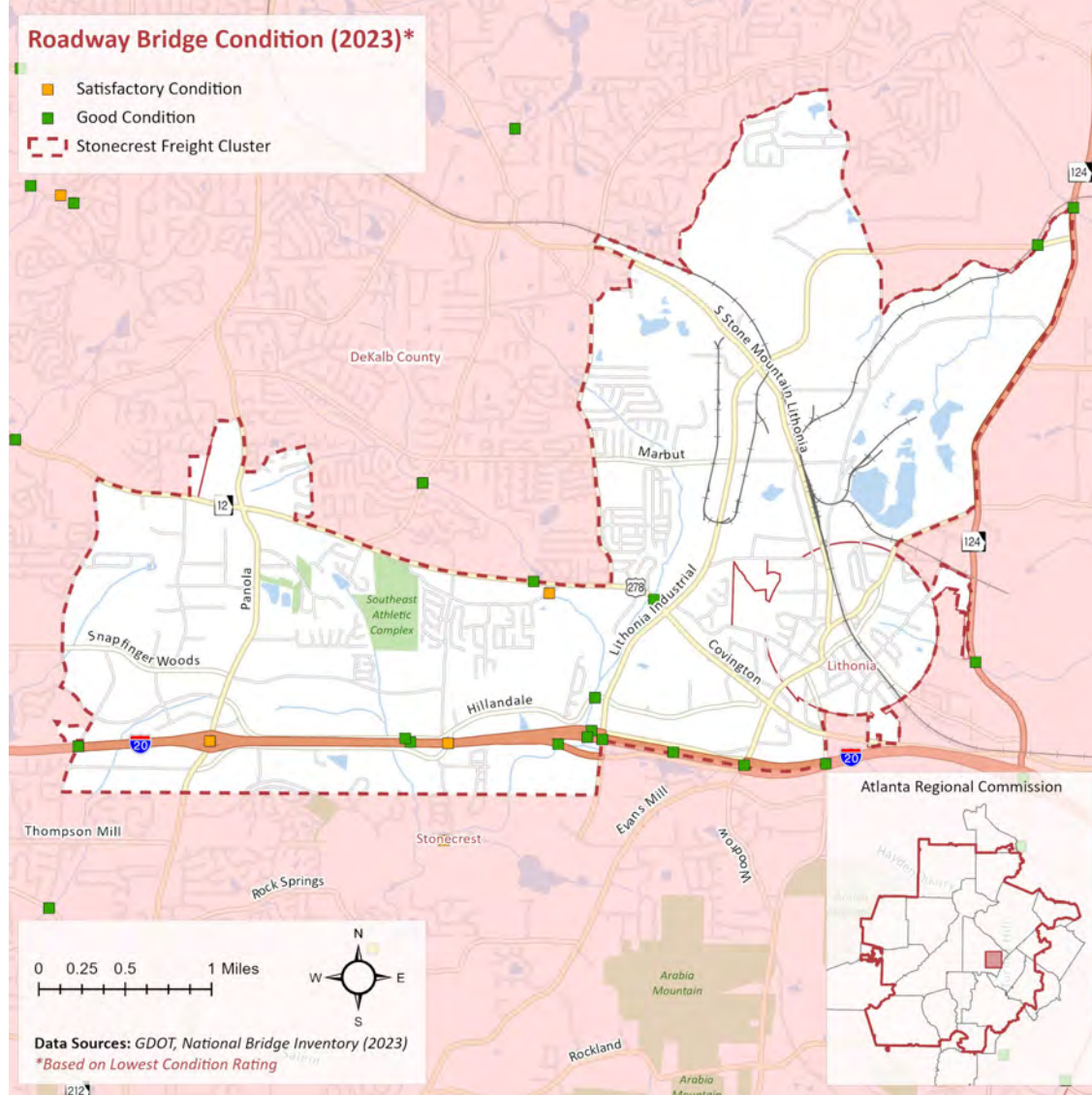
### Roadway Characteristics:

### Bridge Conditions

Lowest (bridge) Rating shows the poorest condition among Deck, Superstructure, Substructure, Channel or Culvert on a scale of 0-9

Three bridges identified with satisfactory ratings (LR = 6).

- Two along I-20
- One on Local road south of US 278/Covington Highway

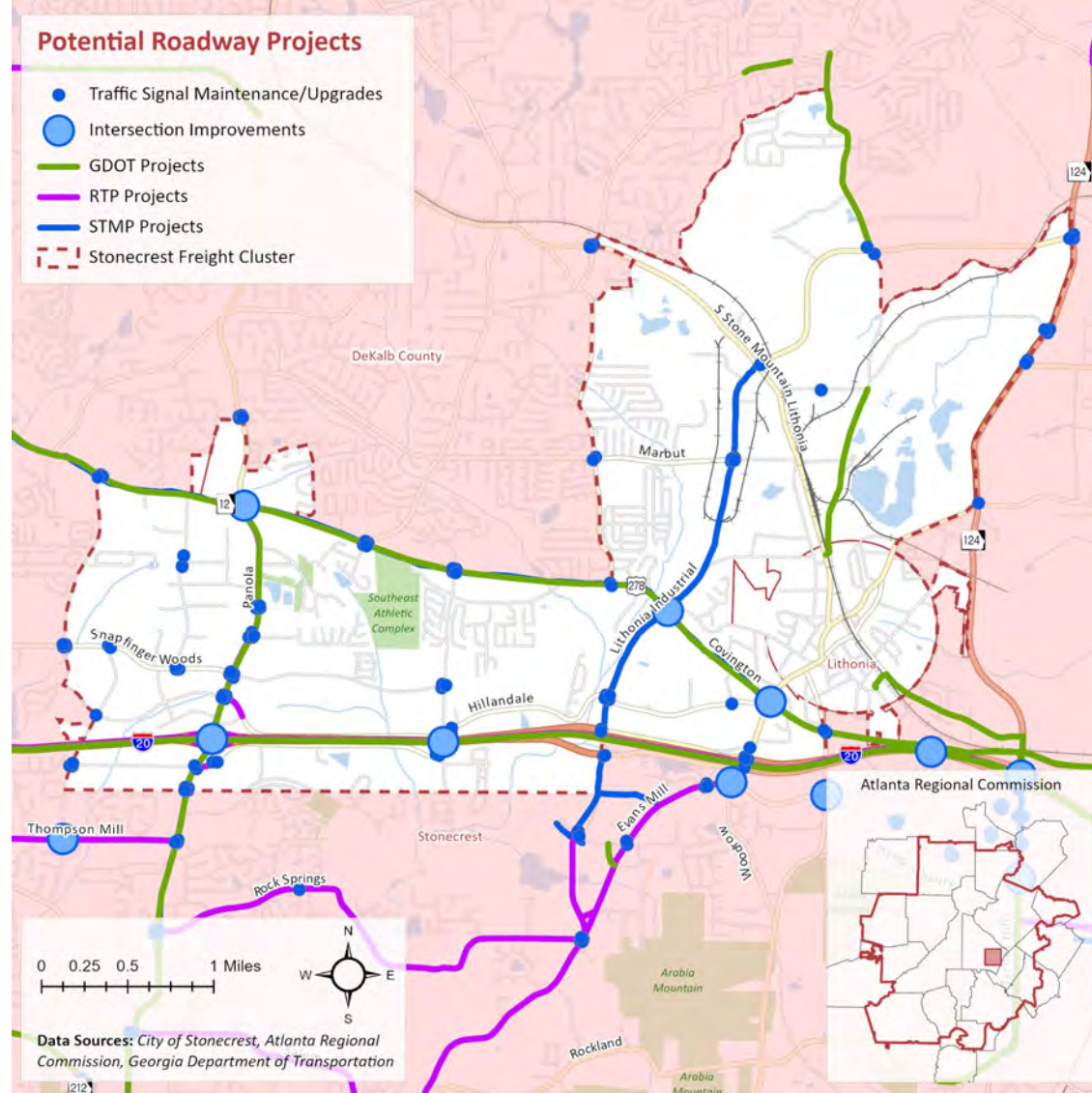


### Roadway Characteristics:

### Planned and Programmed Projects

An initial inventory of planned and programmed projects identified:

- GDOT projects along several state roadways
- Several STMP projects including roadway improvements, intersection improvements, and maintenance projects throughout the area



### Workforce Characteristics: Commuters

### Commute Travel Patterns

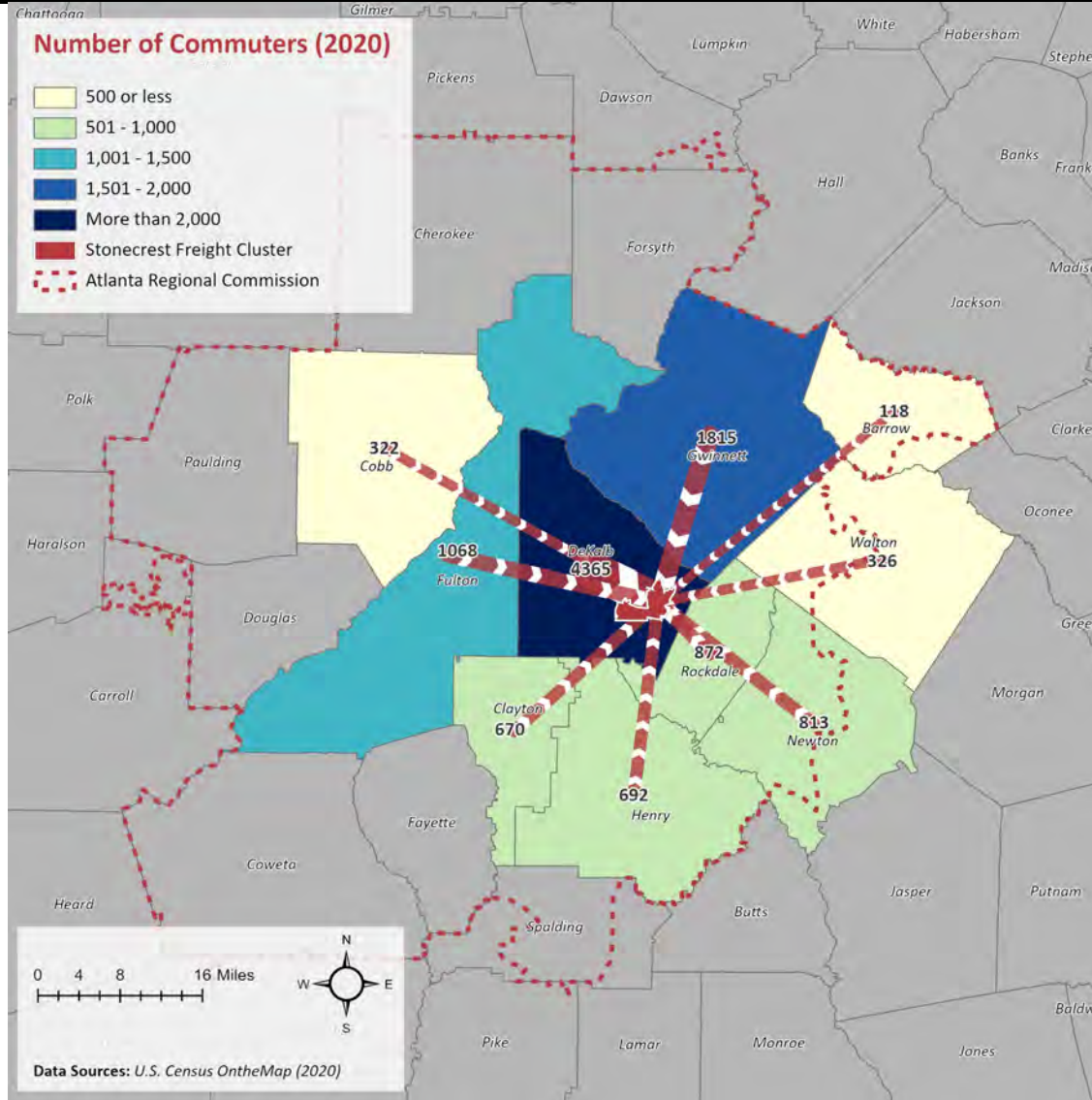
Majority of commuters from:

- DeKalb County

Significant number of commuters from:

- Gwinnett County
- Fulton County
- Rockdale County
- Newton County

18%+ coming from Other locations



Origins	Count	Share
DeKalb County, GA	4,365	32.3%
Gwinnett County, GA	1,815	13.4%
Fulton County, GA	1,068	7.9%
Rockdale County, GA	872	6.4%
Newton County, GA	813	6.0%
Henry County, GA	692	5.1%
Clayton County, GA	670	5.0%
Walton County, GA	326	2.4%
Cobb County, GA	322	2.4%
Barrow County, GA	118	0.9%
<b>All Other Locations</b>	<b>2,465</b>	<b>18.2%</b>
<b>Total</b>	<b>13,526</b>	<b>100.0%</b>



### Freight Network: Truck Restricted Routes



#### City of Stonecrest's Ordinances ([Ordinance No. 2019-04-05, Section 17-94 & 17-361](#))

- Freight vehicles that are over 36,000 pounds in weight, or 30 feet in length, are disallowed in city streets
- Except for the road sections that adjoin properties zoned for industrial activities
- City of Lithonia ([Ordinance No. 2022-01-02, Section 5-1520](#)) enforces a prohibition on truck traffic across all city streets.

#### Unintended Consequences

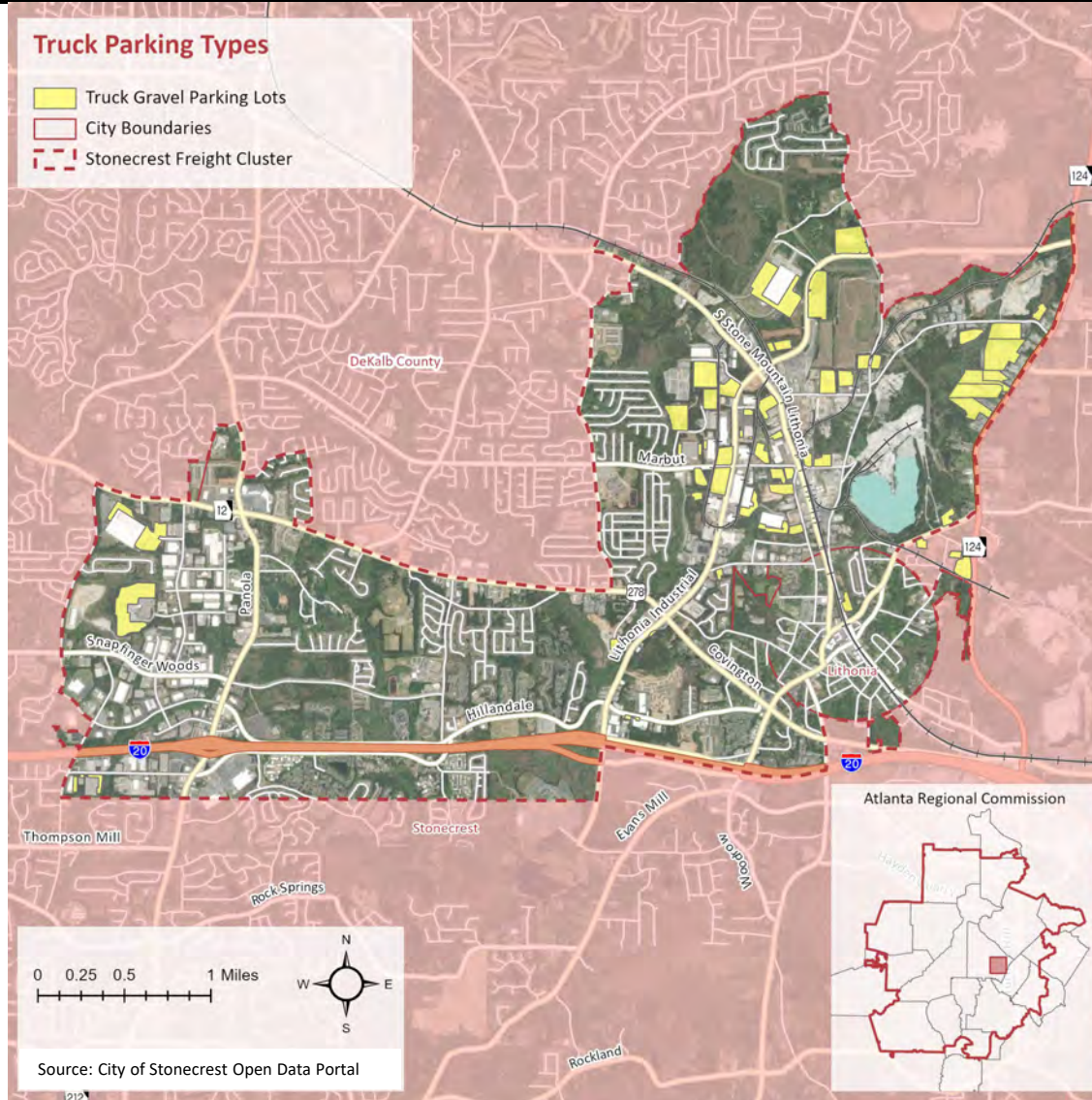
- Truck flow movement in streets not designed for truck traffic to access some of the businesses and truck parking locations
- Resulting in poor pavement condition affecting all traffic flows.



### Truck Parking Characteristics:

#### Gravel Lots

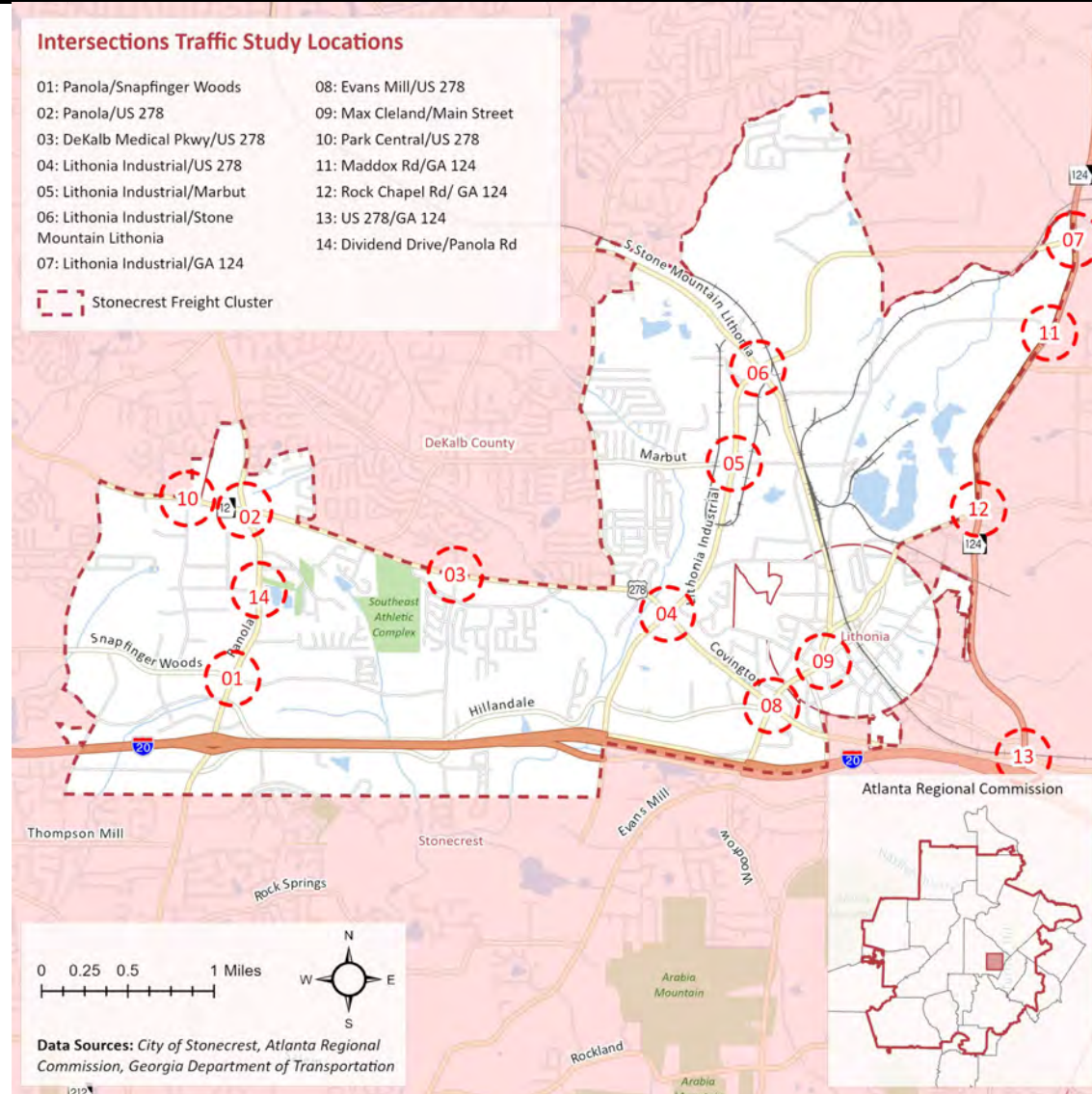
A large number of gravel parking lots have been identified along Lithonia Industrial Boulevard and GA-124/Turner Hill Road



### Traffic Study:

#### Intersections for Further Study

- Panola Road/Snapfinger Woods Drive
- Panola Road/US 278/Covington Highway
- DeKalb Medical Parkway/US 278/Covington Highway
- Lithonia Industrial Boulevard/US 278/Covington Highway
- Lithonia Industrial Boulevard/Marbut Road
- Lithonia Industrial Boulevard/South Stone Mountain Lithonia Road
- Lithonia Industrial Boulevard/GA-124/Turner Hill Road
- Evans Mill Road/US 278/Covington Highway
- Max Cleland Boulevard/Main Street
- Park Central Boulevard/US 278/Covington Highway
- Maddox Road/GA-124/Turner Hill Road
- Rock Chapel Rd/GA-124/Turner Hill Road
- US 278 Covington Highway/GA-124/Turner Hill Road



# Stakeholder Input:



**What do you hope to accomplish with this plan?**

**What are the prevailing freight issues in Stonecrest and where?**

**Does the data shown today accurately reflect conditions in Stonecrest?**





## Next Steps:



Continue Best Practices Report



Continue Inventory and Assessment



Continue Traffic Study



Develop Vision Goals and Objectives





# FREIGHT CLUSTER PLAN

IN COOPERATION WITH 

## THANK YOU!

**Wade Carroll**

**CONSULTANT PROJECT MANAGER**

**PHONE: (404) 566-1033**

**EMAIL: [wcarroll@metroanalytics.com](mailto:wcarroll@metroanalytics.com)**



**STEERING COMMITTEE MEETING  
SEPTEMBER 12, 2023**

